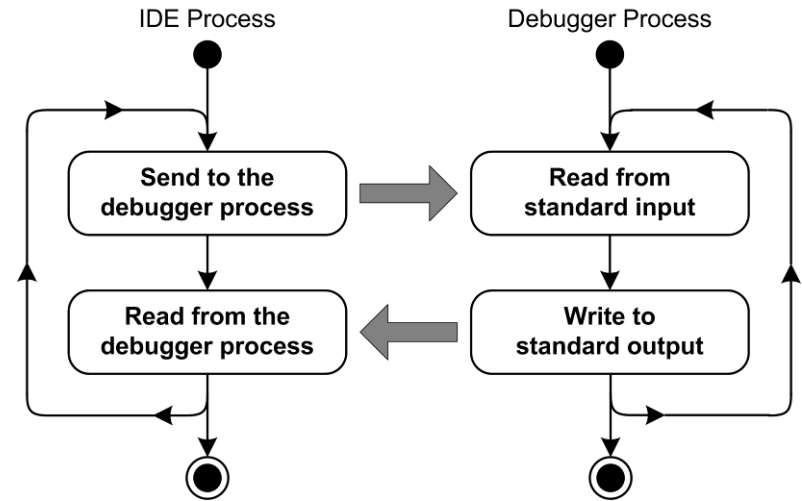


ROPE Interprocess Communication

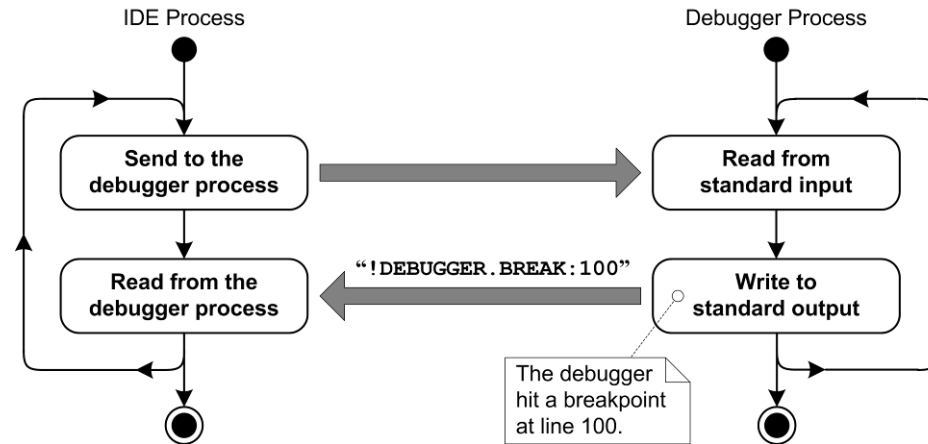
- The **IDE process** sends debugger commands to the **debugger process**.
 - The **IDE** writes the commands to its **standard output**.
 - The **debugger** reads the commands via its **standard input**.



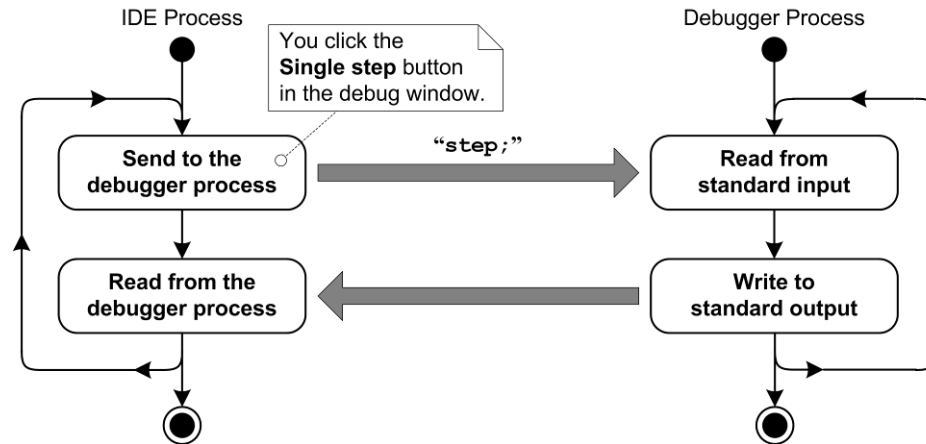
- The **debugger process** sends status information or program output to the **IDE process**.
 - The **debugger** writes to its **standard output**.
 - The **IDE** reads the debugger's output via its **standard input**.

- The debugger running in the **debugger process** believes that it's reading debugger commands typed on the command line and that it's writing to the console.

ROPE Interprocess Communication, *cont'd*



ROPE Interprocess Communication, *cont'd*



ROPE Interprocess Communication, *cont'd*

