

5406502

MASTER

MOD "A"
29 WIRING DIAGRAM INDEX

NAME	SECTION	PART NUMBER
POWER SUPPLY 60 CYCLE		5761451
POWER SUPPLY 50 CYCLE		5761461
NUM KYBD-INTERPOSER MAG-PIN SENSE	1 AND 2	5405913
64 CHARACTER KYBD	3 AND 4	5405944
CARD FEED-PROG SELECT-PRINT	5 AND 6	5405916
DUP-CLEAR-RELEASE-CARD LEVER	7 AND 8	5405917
PCH CLUTCH-MP-ALPHA-KYBD RESTORE	9 AND 10	5405918
SKIP-ESCAPE MAGNET	11 AND 12	5405948
COMPONENT LOCATION	13 AND 14	5405912
KEYBOARD AND CAM REFERENCE		5373561
PRINT -SMS CARD		375105
ARC SUPP -SMS CARD		375233
COMBINATION KYBD CODE CHART		5367164
NUMERIC KYBD CODE CHART		5367184

FOR ENGINEERING USE

PREVIOUS ASSIGNED PAGE(S) PART NUMBER(S)

INDEX PAGE(S) P/N 5406501LOGIC PAGE(S) P/N 5405911, 5405914, 5405915REPLACED BY PART NUMBER(S) 5405916, 5405917, 5405918

NOTES

XI PART NUMBERS 5406501 THRU 5406550 ARE
RESERVED FOR MODEL "A" INDEX PAGES
(ENG NOTE)

XII LAST BALLOON USED (86) NOT USED; 11, 24, 26, 40-73,
75, 77-85 (ENG NOTE)

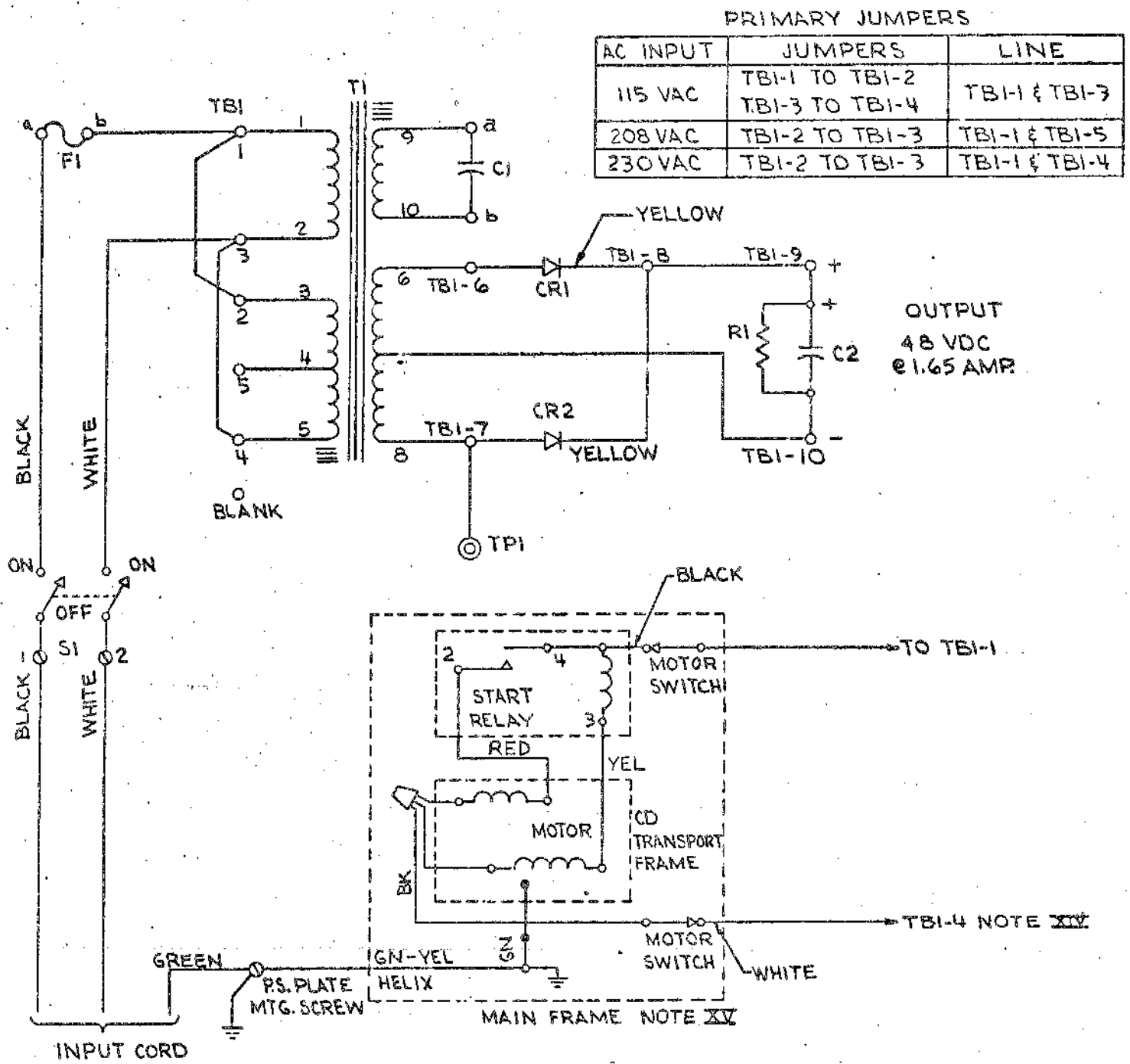
INTERNATIONAL BUSINESS MACHINES CORP.				DATE	CHANGE NO.	DATE	CHANGE NO.	NOTE	DEVELOPMENT NO.
NAME	SYSTEMS DIAGRAM			11 OCT 68	206435			X PRINT TO ENG. SPEC. NO. 895291	5406502
	W D INDEX			4 NOV 69	920064				
DESIGN	AG	9SEP66	MODEL						
DETAIL									
CHECK	KAS	9SEP66	DRAW	IDI	12 JUL 68				
APPRO	FJH	9SEP66	CHECK						

5761451

POWER SUPPLY 60 HZ

REFERENCE DRAWING

YF337



PRIMARY JUMPERS

AC INPUT	JUMPERS	LINE
115 VAC	TBI-1 TO TBI-2 TBI-3 TO TBI-4	TBI-1 & TBI-3
208 VAC	TBI-2 TO TBI-3	TBI-1 & TBI-5
230 VAC	TBI-2 TO TBI-3	TBI-1 & TBI-4

OUTPUT
48 VDC
@ 1.65 AMP

SYMBOL	DESCRIPTION	PART NO
TI	FERRO REGULATOR	5761559
CR1 & CR2	2A. FLANGLSS RECTIFIER	5323537
C1	CAPACITOR 6MFD 330 VAC	2159748
C2	CAPACITOR 5000MFD 55VDC	208222
R1	RESISTOR 500 Ω 10W	338571
S1	SWITCH	5214428
FI	FUSE 4A	1143492
C1	CAPACITOR 6MFD 330 VAC	5252807

NOTE XVI

NOTE XII

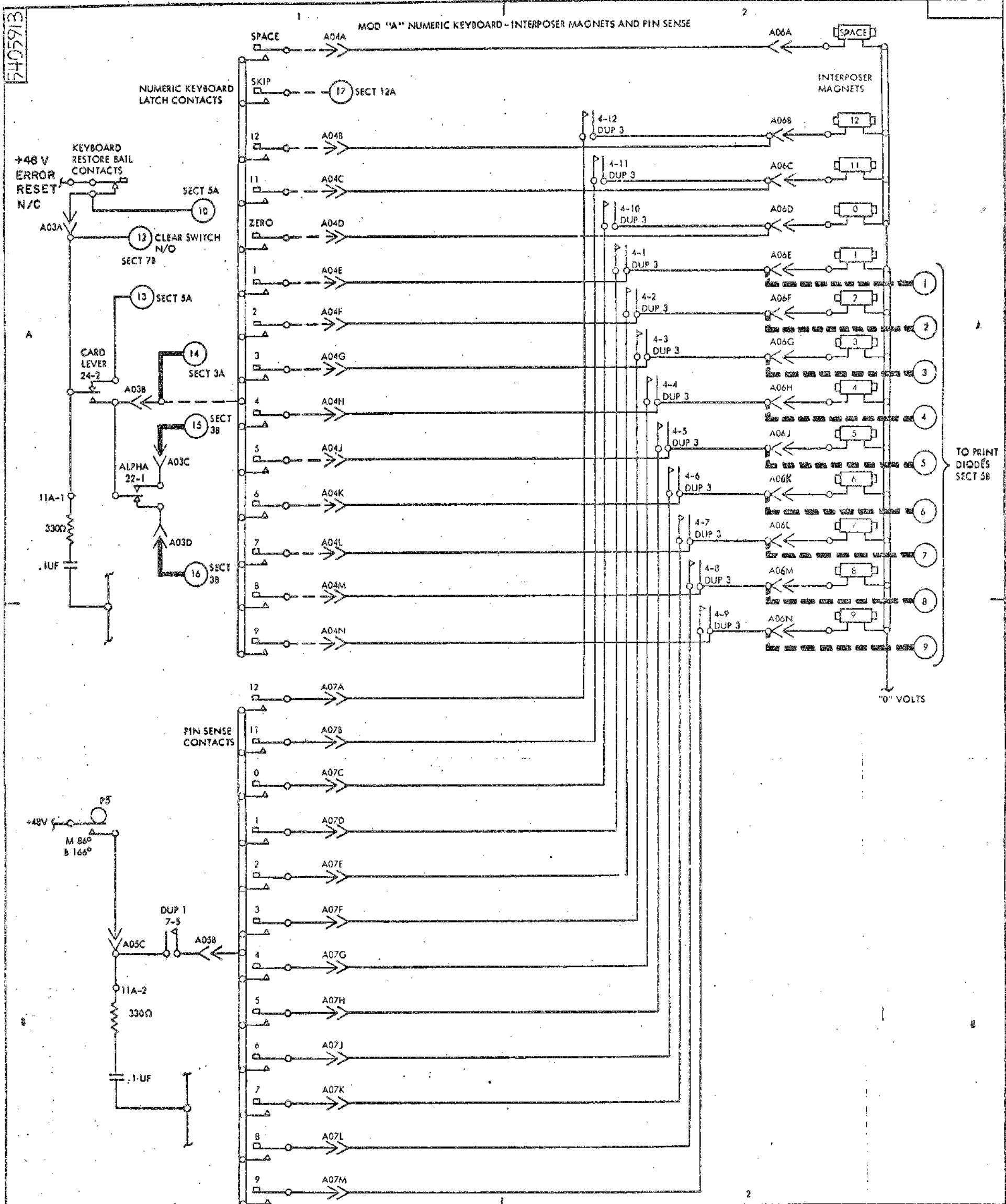
NOTE XVI

NOTES

- XI FACTORY WIRED FOR 115V AC
- XII FOR 208/230V INPUT, USE 615683 (2A) FUSE
- XIII WIRING DIAGRAM 5253883 APPLIES TO UNITS PRIOR TO EC 708099 LEVEL
- XIV FOR 208V INPUT, CONNECT THIS LEAD TO TBI-5
- XV MAIN FRAME INF FOR THE 029 GROUP
- XVI CAPACITOR 2159748 (REF) USED IN P/S 5404080 (REF)
CAPACITOR 5252807 (REF) USED IN P/S 2625000 (REF)

RELEASE FOR P/S 2625000 (REF) 5404080 (REF)

INTERNATIONAL BUSINESS MACHINES CORP.	DATE	CHANGE NO.	DATE	CHANGE NO.	NOTE	DEVELOPMENT NO.
NAME WIRING DIAGRAM -	20JUL66	708099	15JAN73	718926		
48VDC @ 1.65A P/S 60HZ	10APR67	709472			X PRINT TO ENG. SPEC. NO.	
DESIGN ALM/6-6-66 MODEL	3NOV67	710705			895291	5761451
DETAIL AC/NAT/6-6-66	6MAR68	710998-A				YF337
CHECK 6/26/68 DNW	10OCT68	711702-A				
APPRO 6/26/68 CHECK						



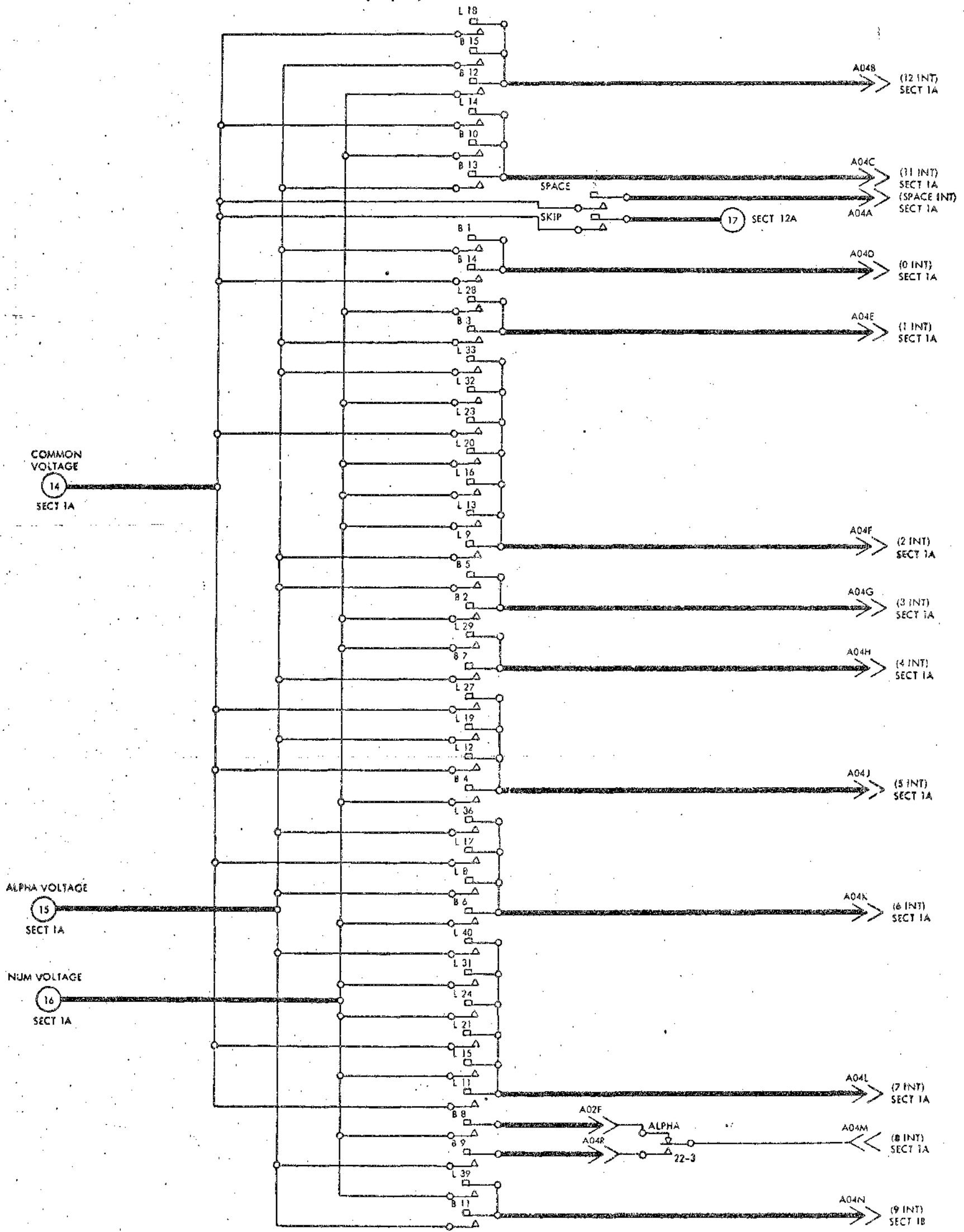
TO PRINT DIODES SECT 3B

NOTES
 I POINT TO POINT WIRING FOR +48V AND "0" VOLT NETS SHOWN ON REF PAGE

INTERNATIONAL BUSINESS MACHINES CORP.				DATE	CHANGE NO.	DATE	CHANGE NO.	NOTE	DEVELOPMENT NO.
NAME				14 OCT 66	2057/2-G			I POINT TO ENG. SPEC. NO. 895291	5405913
NUM KYBD-INT MAG-PIN SENSE				31OCT69	920064				
DESIGN				AC 9 SEP 66	MDL				
DETAIL									
CHECK	RAS	PSEP 66	DRAW	GT	7SEP 66				
APPRO	JH	PSEP 66	CHECK						

5405944

MOD "A", "B", "C", "10" & "11" 64 CHARACTER KEYBOARD



NOTES
 X POINT TO POINT WIRING FOR +48V AND "0" VOLT NETS SHOWN ON REF PAGE

INTERNATIONAL BUSINESS MACHINES CORP.		DATE	CHANGE NO.	DATE	CHANGE NO.	NOTE	DEVELOPMENT NO.
NAME	SYSTEMS DIAGRAM	19 SEP 66	203636 - G			X PRINT TO ENG. SPEC. NO. 895291	5405944
	64 CHARACTER KEYBOARD	18 OCT 66	205811 - A				
DESIGN	EB 8 SEP 66 MODEL						
DETAIL	AG 9 SEP 66						
CHECK	RAS 9 SEP 66 DRAW	GT	7 SEP 66				
APPROV	US 9 SEP 66 CHECK						

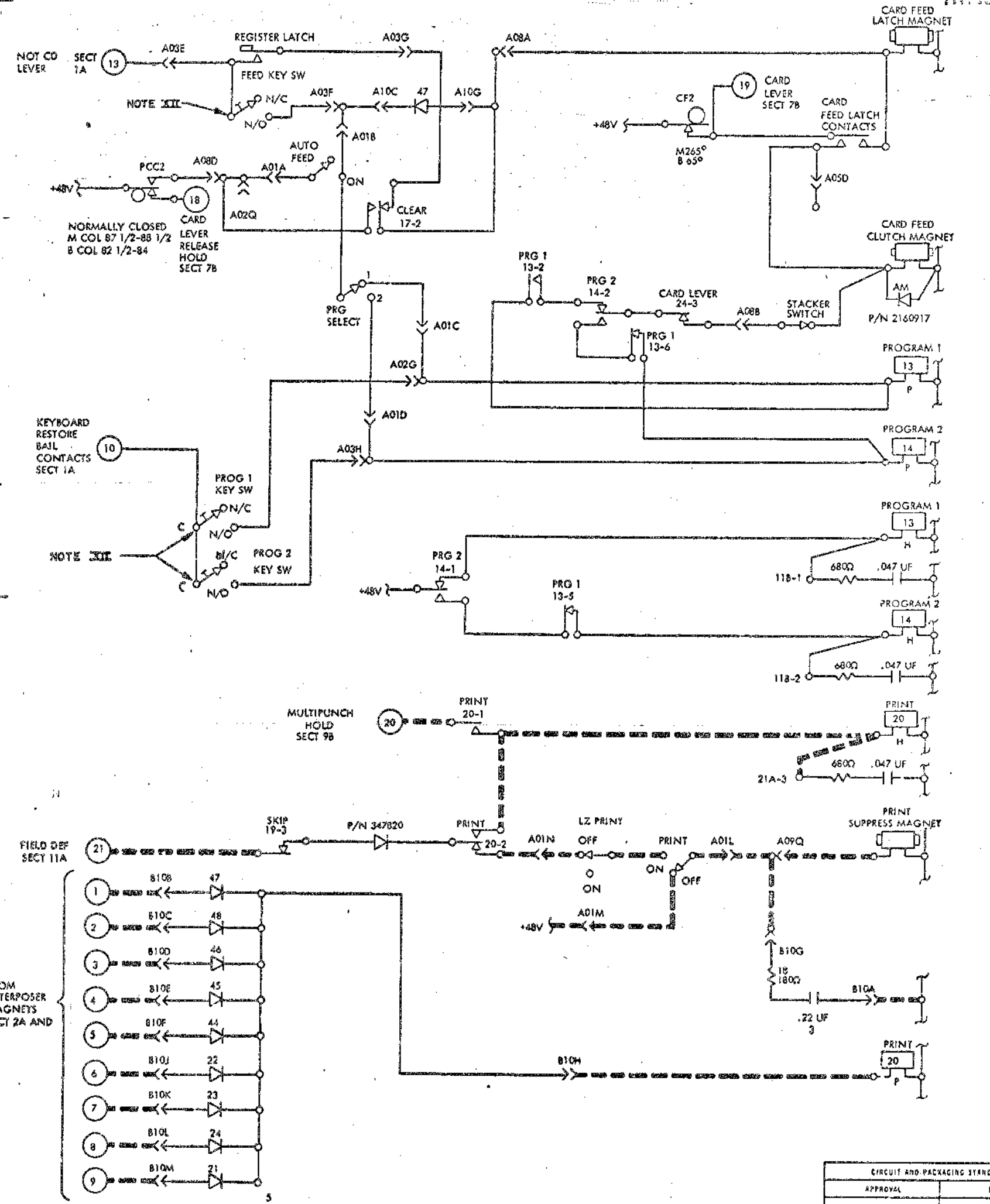
5405916

STANDARD CODE

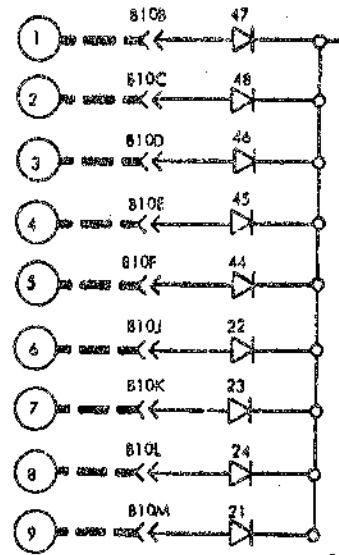
MOD "A" AND "B" CARD FEED-PROG SELECT-PRINT

CARD CODE

WESTON



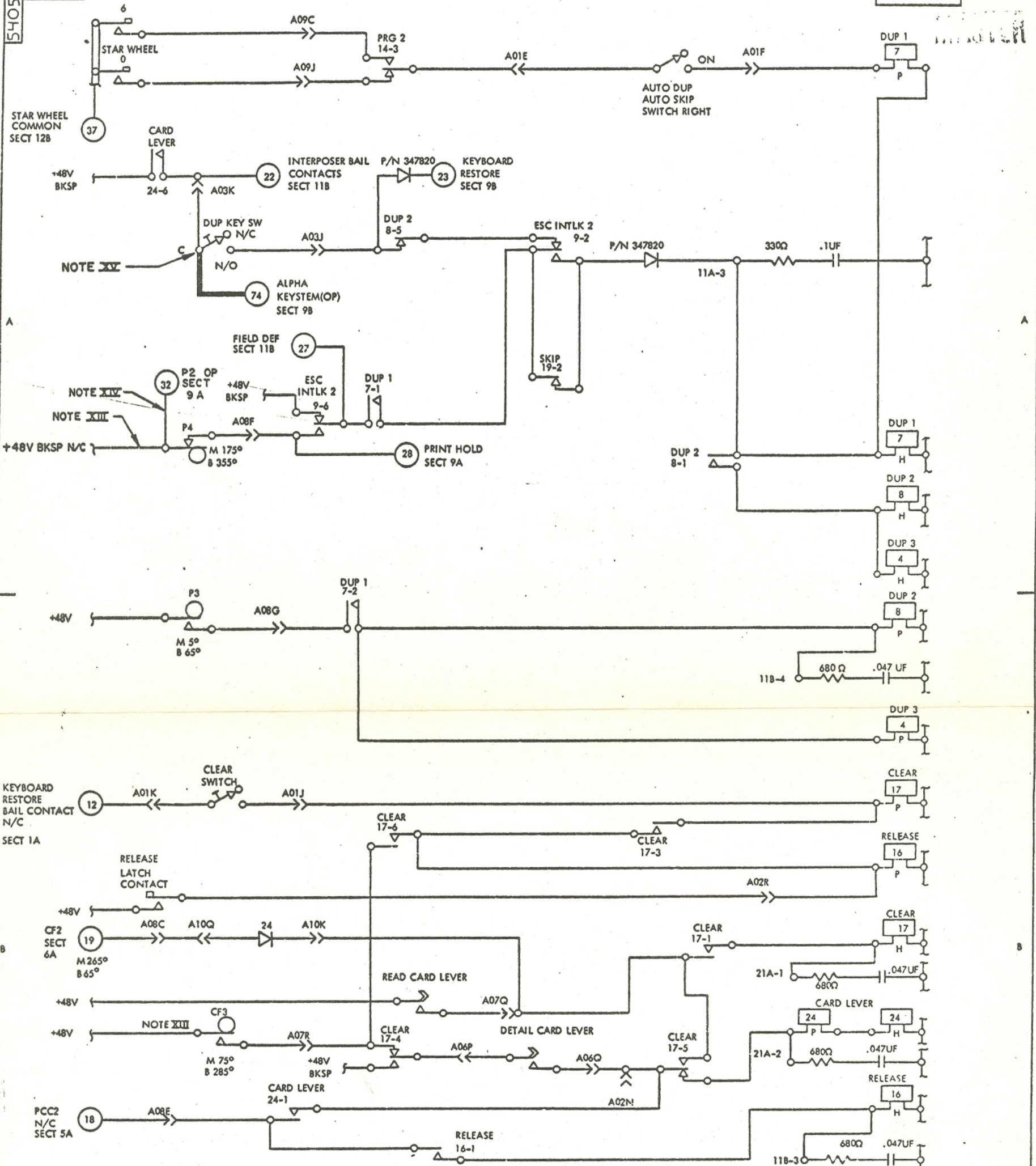
FIELD DEF SECT 11A



NOTES
 X PRINT TO ENG SPEC NO 895291
 XI POINT TO POINT WIRING FOR +48V AND "0" VOLT NETS SHOWN ON REF PAGE
 XII A STRAP CONTACT KEYBOARD MAY BE INSTALLED ON THIS M/C

INTERNATIONAL BUSINESS MACHINES CORP.				CIRCUIT AND PACKAGING STANDARD			
NAME	DATE	CHANGE NO.	APPROVAL	DATE	CHANGE NO.	APPROVAL	DEVELOPMENT NO.
SYSTEMS DIAGRAM	11OCT68	206435					
CD FEED-PROG SEL-PRINT	23MAR 71	920307					
DESIGN: EB	USE FOR MODEL						
DETAIL: AG	USE FOR SCALE						
CHECK: RAS	USE FOR DRAW	IDI 1AUG68					
APPRO: RSS	USE FOR CHECK						

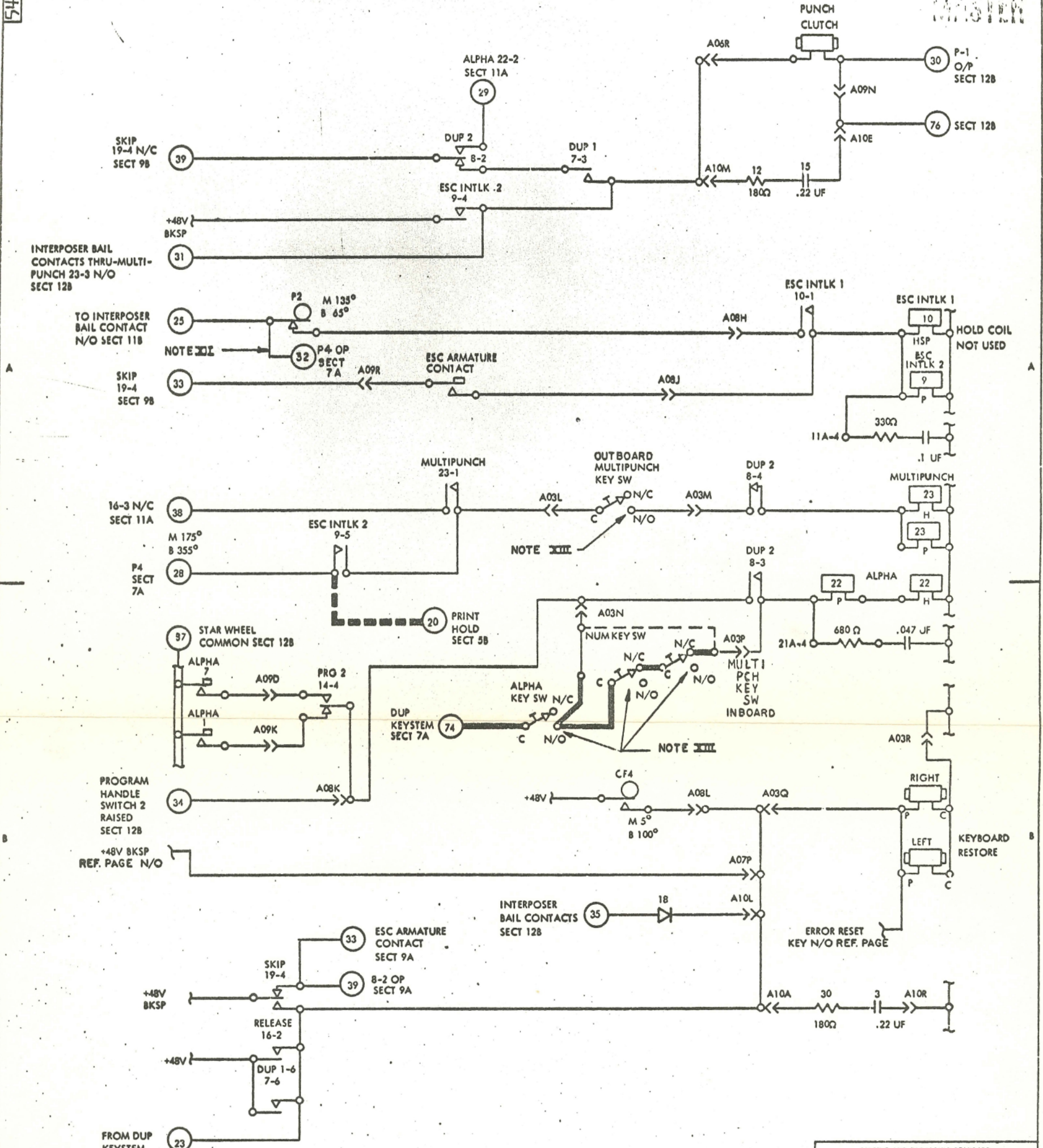
5405916



- NOTES
- X PRINT TO ENG SPEC NO 895291
 - XI POINT TO POINT WIRING FOR +48V AND "0" VOLT NETS SHOWN ON REF PAGE
 - XII CF3 TIMING FOR VLCD AND/OR HSS M90° ± 2° B300° ± 5°
 - XIII FACTORY REMOVE EC 920064 OCT 69
 - XIV FACTORY INSTALL EC 920064 OCT 69
 - CXX** A STRAP CONTACT KEYBOARD MAY BE INSTALLED ON THIS M/C

INTERNATIONAL BUSINESS MACHINES CORP.				DATE	CHANGE NO.	APPROVAL	DATE	CHANGE NO.	APPROVAL	DEVELOPMENT NO.
NAME	SYSTEMS DIAGRAM			1 OCT 68	206435					5405917
	DUP-CLEAR-REL-CD LEVER			4 NOV 69	920064					
DESIGN	AG 95EP66 MODEL			23 MAR 71	920307					
DETAIL	RAS 95FP68 SCALE									
CHECK	FJH 95EP68 DRAW									
APPRO	FJH 95EP68 CHECK									

MOD "A" & "C"
PUNCH CLUTCH-MULTI PCH-ALPHA-KEYBOARD RESTORE



NOTES

- I** PRINT TO ENG SPEC NO 895291
- II** POINT TO POINT WIRING FOR +48V AND "0" VOLT NETS SHOWN ON REF PAGE
- XII** FACTORY INSTALL EC 920064 OCT 69
- XIII** A STRAP CONTACT KEYBOARD MAY BE INSTALLED ON THIS M/C

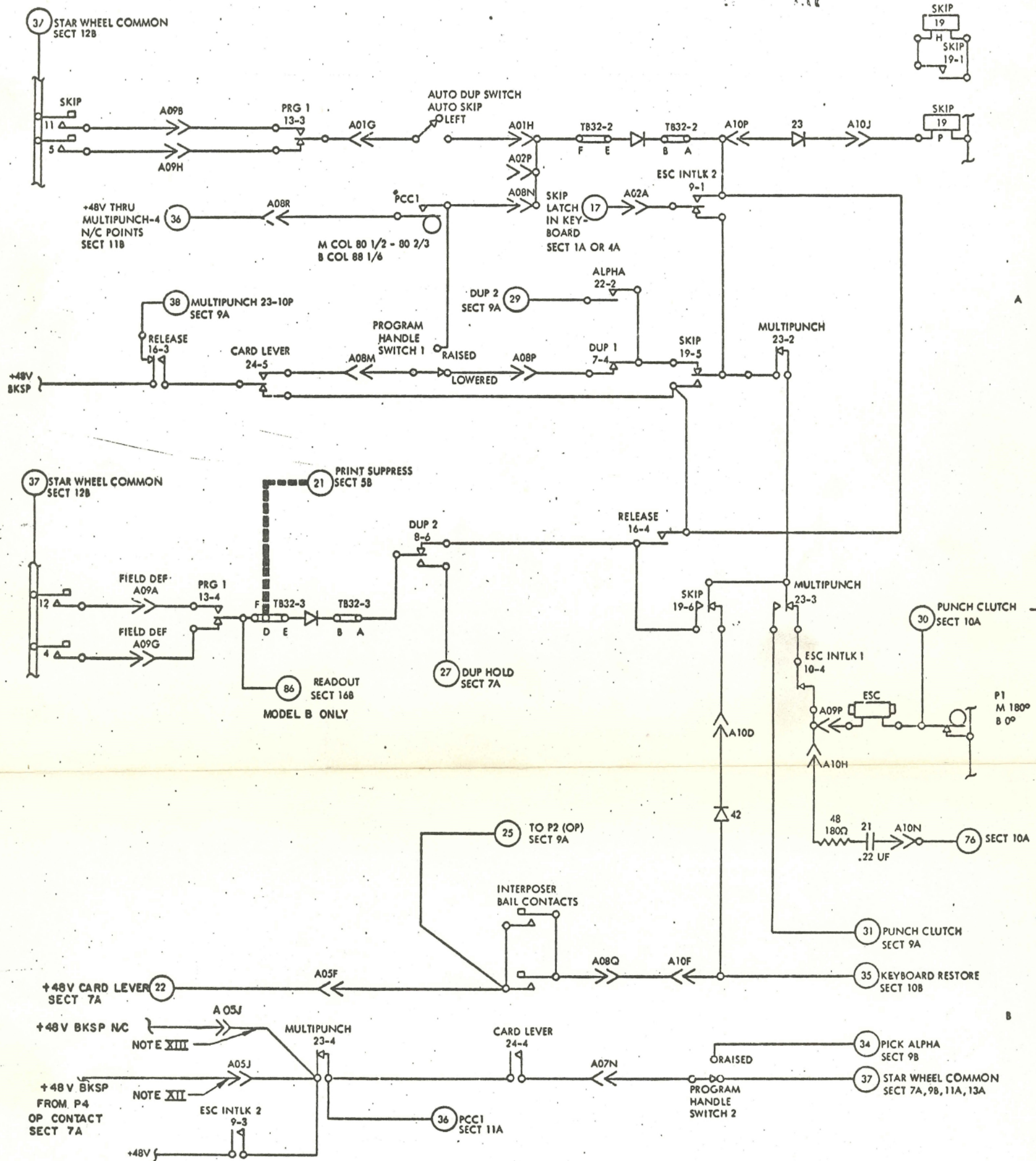
INTERNATIONAL BUSINESS MACHINES CORP.							
NAME	DATE	CHANGE NO.	APPROVAL	DATE	CHANGE NO.	APPROVAL	DEVELOPMENT NO.
SYSTEMS DIAGRAM	11 OCT 68	206435					
PCH CLUTCH-MP-ALPHA-KYBD RES	4 NOV 69	920064					
DESIGN AG 95EP66	23 MAR 71	920307					
CHECK RAS 95EP66							
APPRO FJH 95EP66							

CIRCUIT AND PACKAGING STANDARD	
APPROVAL	DATE

5405918

5405948

MOD "A" & "B" SKIP-ESCAPE MAGNET



- NOTES
 XI POINT TO POINT WIRING FOR +48V AND "0" VOLT NETS SHOWN ON REF PAGE
 XII FACTORY REMOVED EC 920064 OCT 69
 XIII FACTORY INSTALLED EC 920064 OCT 69

INTERNATIONAL BUSINESS MACHINES CORP.		DATE	CHANGE NO.	DATE	CHANGE NO.	NOTE	DEVELOPMENT NO.
NAME	SYSTEMS DIAGRAM	19 SEP 66	205666 - G			NOTE X PRINT TO ENG. SPEC. NO. 895291	5405948
	SKIP - ESCAPE - MAGNET	18 OCT 66	205811 - A				
DESIGN	EB 11 SEP 66 MODEL	11 NOV 66	205813 - A				
DETAIL	AG 9 SEP 66	4 NOV 69	920064				
CHECK	RAS 9 SEP 66 DRAW						
APPRO	RS 7 SEP 66 CHECK						

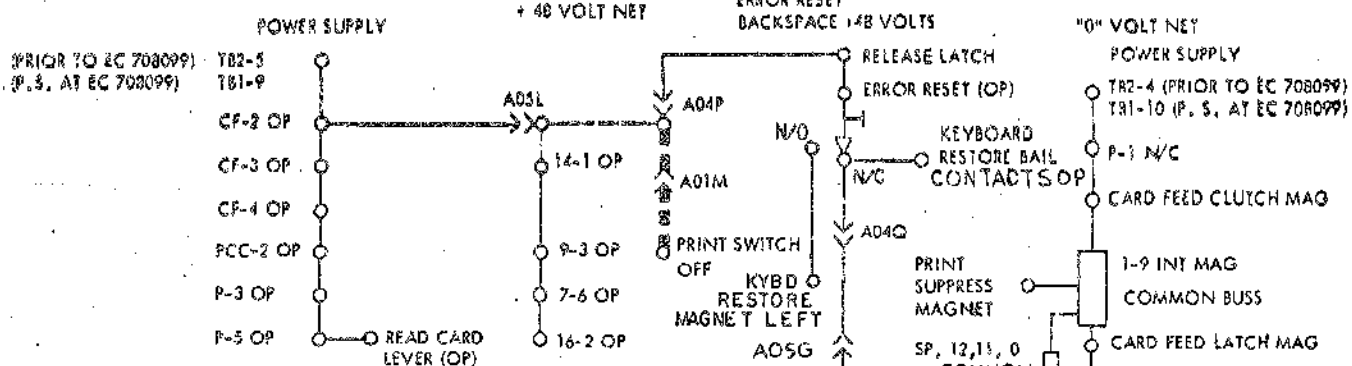
5405948

540591Z

13

MOD "A"

14



WIRE CONTACT RELAY LOCATION

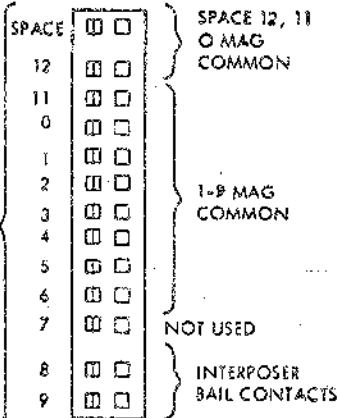
RELAY	NO.	COIL	1	2	3	4	5	6	7	8	9	10	11	12	PART NO.	COIL TYPE
DUP 3	4	8B 8A	2A	2A	2A	2A	2A	2A	2A	2A	2A	2A	2A	2A	255/35	PU HRH
DUP 1	7	8A 8A	7A	7B	10A	12A	18	9B	-	-	-	-	-	-	196198	PU HRH
DUP 2	8	9B 8A	6A	9A	10B	10A	7A	11A	-	-	-	-	-	-	196198	PU HRH
ESC INTLK 2	9	10A	-	12A	8A	11B	9A	7A	-	-	-	-	-	-	196196	PU
ESC INTLK 1	10	10A	-	10A	-	12B	-	-	-	-	-	-	-	-	328273	HSP
PROGRAM 1	13	6A 6A	6A	6A	11A	11B	6B	6A	-	-	-	-	-	-	196198	PU HRH
PROGRAM 2	14	6A 6B	6B	6A	7A	9B	-	-	-	-	-	-	-	-	196208	PU HRH
RELEASE	16	8B 8B	7B	9B	11A	12A	-	-	-	-	-	-	-	-	196208	PU HRH
CLEAR	17	8B 8B	8B	8B	5A	9B	7B	8B	7B	-	-	-	-	-	196198	PU HRH
SKIP	19	12A 12A	12A	8A	5B	9B	12A	12A	-	-	-	-	-	-	196198	PU HRH
PRINT	20	6B 6B	5B	5B	-	-	-	-	-	-	-	-	-	-	196208	PU HRH
ALPHA	22	10B 10B	1A	12A	4B	XSKIP	-	-	-	-	-	-	-	-	196208	PU HRH
MULTIPUNCH	23	10A 10A	9A	12A	12A	11B	-	-	-	-	-	-	-	-	104753	HSPU WOLD
CARD LEVER	24	8B 8B	7B	1A	6A	11B	11A	7A	-	-	-	-	-	-	196198	PU HRH

* DO NOT INSERT WIRES

SMS CARD NAME	CONNECTOR CHART										ARC SUPP	PRINT
	A01	A02	A03	A04	A05	A06	A07	A08	A09	A10		
A	5A	12A	1A	1A	2A	1B	6A	11A	10B			6B
B	5A		1A	1A	1B	2A	1B	6A	11A			5B
C	5A		1A	1A	1B	2A	1B	7B	7A	5A		5B
D	5A	MCT	1A	1A	6A	2A	1B	5A	9B	12B		5B
E	8A	AUX DUP	5A	1A	14A	2A	1B	7B		10A		5B
F	8A	4B	5A	1A	11B	2A	1B	7A		12B		5B
G	11A	5A	5A	1A	14A	2A	1B	7B	11B	5A		5B
H	11A		5A	1A		2A	1B	9A	11A	12B		5B
J	7B		7A	1A	11B	2A	1B	9A	7A	12A		5B
K	7B		7A	1A		2A	1B	9B	9B	7B		5B
L	6B		10A	1A	14A	2A	1B	10B		10B		5B
M	6B	XSKIP	10A	1A	VLCD	2A	1B	11A		10A		5B
N	6B	8B	10B	1B	HSS	2B	12B	11A	10A	12B		
P	MCT	11A	10B	14A	HSS	7B	10B	11A	12B	12A		
Q		5A	10B	14A	MCT	8B	7B	12B	6B	7B		
R		8B	10B	4B	HSS	10A	7B	11A	9A	10B		

INTERPOSER MAGNETS

PUNCH UNIT TERM BLOCK FACING WRINKLED LUGS



PART NO.	FROM	TO	SECTION
2160917	ACROSS CD FD	MAG	6A
347820	19-3 OP	20-2 OP	5B
347820	7-6N O	8-5N/C	7A
347820	9-2N O	11A-3	8A

ARC SUPPRESSION BLOCKS

PIN	11A	11B	21A
1	1A	6A	8B
2	1B	6B	8B
3	8A	8B	6B
4	10A	8B	10B

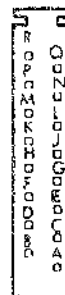
328602
328601
328601
CARD FEED CAMS

NO.	LOCATION	PART NO.	MAKE	BREAK
2	6A	344181	265° 1.5	65° 1.2
3	7B	315942	75° 1.2	285° 1.5
4	10B	313807	5° 2	100° 1.5

PUNCH CAMS

NO.	LOC	PART NO.	M	B
1	12B	309630	180° 1.2	0° 1.3
2	9A	309634	135° 1.7	65° 1.2
3	7B	350359	5° 1.1	65° 1.3
4	7A	309630	175° 1.3	355° 1.2
5	1B	309629	86° 1.3	150° 1.2

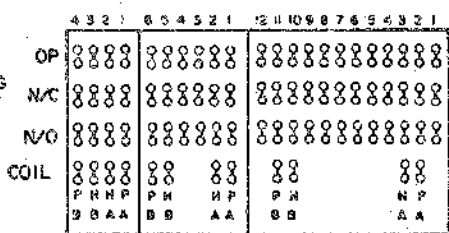
SMS SINGLE CARDS POSITIONS A01 THRU A10 & B10



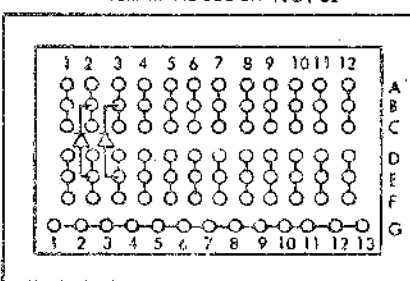
VIEW - TOP OF OPEN GATE (WIRING SIDE)

LEGEND

- PRINT FEATURE WIRING
- COMBINATION KEYBOARD WIRING
- NUMERIC KEYBOARD WIRING
- COMMON BUSS



TERMINAL BLOCK NO. 32



NOTES

- XI AS REQ'D FIELD CHANGE ON EC 205981
- XII FACTORY REMOVE EC 920064 OCT 69
- XIII FACTORY INSTALL EC 920064 OCT 69

INTERNATIONAL BUSINESS MACHINES CORP.				DATE	CHARGE NO.	DATE	CHARGE NO.	NOTE	DEVELOPMENT NO.
NAME	SYSTEMS DIAGRAM			14 OCT 66	205772-G	4 NOV 69	920064	895291	540591Z
DESIGN	COMPONENT LOCATION			9 FEB 67	205642-A				
DETAIL	AG 951P66 MODEL			27 MAR 67	205983				
CHECK	SAS 951P63 DRAW 101 2205667			17 APR 67	205981				
APPRO	FJH 951P66 CHECK			22 DEC 67	206154				

5373561

00.29.10.0

KEYBOARD & CAM REFERENCE

IBMT

MECHANICAL TIME CHART
CARD FEED MECHANISM

STEM POS	GRAPHIC		CARD CODE		BAILS		LATCHES	
	ALPHA	NUMERIC	ALPHA	NUMERIC	ALPHA	NUMERIC	ALPHA	NUMERIC
1	ERROR RESET							
2	MULTI PUNCH							
3	NUMERIC							
4	Q	+	11-8	12-8-6	13,9	12,8,6		
5	A		12-1		15,3			
6	@	#	8-4	8-3	9,7	8,2		
7	Z		0-9		1,11			
8	W	-	0-6	0-8-5	14	14,8,4	X	
9	S	>	0-2	0-8-6	14	14,8,6	X	
10	%	,	0-8-4	0-8-3	14,9,7	14,8,2		
11	X	7	0-7	0-8-7	14	14,8	X	X
12	E	2	12-5	11-8-5	15	10,8	X	X
13	D	:	12-4	8-2	15,7	8		X
14	*	\$	11-8-4	11-8-3	7,9	8,2	X	X
15	C	"	12-3	8-7	15,5	8		X
16	R	¢	11-9	12-8-2	13,11	12,8		X
17	F	;	12-6	11-8-6	15	10,8	X	X
18	<	.	12-8-4	12-8-3	9,7	8,2	X	X
19	V	=	0-5	6-8	1	8,6	X	
20	T	0-8-2	0-3	0-8-2	14,5	14,8		X
21	G	-	12-7	11-8-7	15	10,8	X	X
22	MASTERCARD						X	X
23	B	!	12-2	11-8-2	15	10,8	X	X
24	Y		0-8	12-8-7	1,9	12,8		X
25	H	'	12-8	8-5	15,9	8,4		
26	DUP							
27	N	¢	11-5	12-8-5	13	12,8	X	X
28	U	1	0-4	1	1,7			X
29	J	4	11-1	4	13,3			X
30	-	-	11	11	13	10		
31	M	7	11-4	7	13,7			X
32	I	2	12-9	2	15,11			X
33	K	5	11-2	5	13	4	X	
34	/	0	0-1	0	14,3	14		
35	,	8	083	8	19,5	8		
36	O	3	116	3	13	2	X	
37	L	6	113	6	13,5	6		
38	SPACE						X	X
39	.	9	1283	9	15,9,5			X
40	P	8	11-7	12	13	12	X	
41	SKIP						X	X
42	RELEASE						X	X
43	AUX DUP						X	X
44	FEED							
45	REGISTER						X	X
46	PROG 2							
47	ALPHA							
48	LEFT ZERO						X	X
49	LEFT ZERO							
50	PROG 1							

ODD NUMBER BAILES ON RIGHT SIDE OF KEYBOARD
EVEN NUMBER BAILES ON LEFT SIDE OF KEYBOARD

CARD FEED CLUTCH
60 RPM
1° = 2.78 MS

CARD FEED KNIFE

CARD ALIGNER
(VERTICAL ALIGNMENT)

CARD PUSHER FEED
(FOR DETAIL CARD)

PRESSURE ROLLS
(ON FEED WHEELS)

INSERTING ROLL
(FOR MASTER CARD)

CARD REGISTER STOP
(FOR MASTER STOP)

EJECT ROLL
(FOR CARD TO BE STACKED)

CARD PUSHER-STACKER

STACKER DRUM GRIPPERS

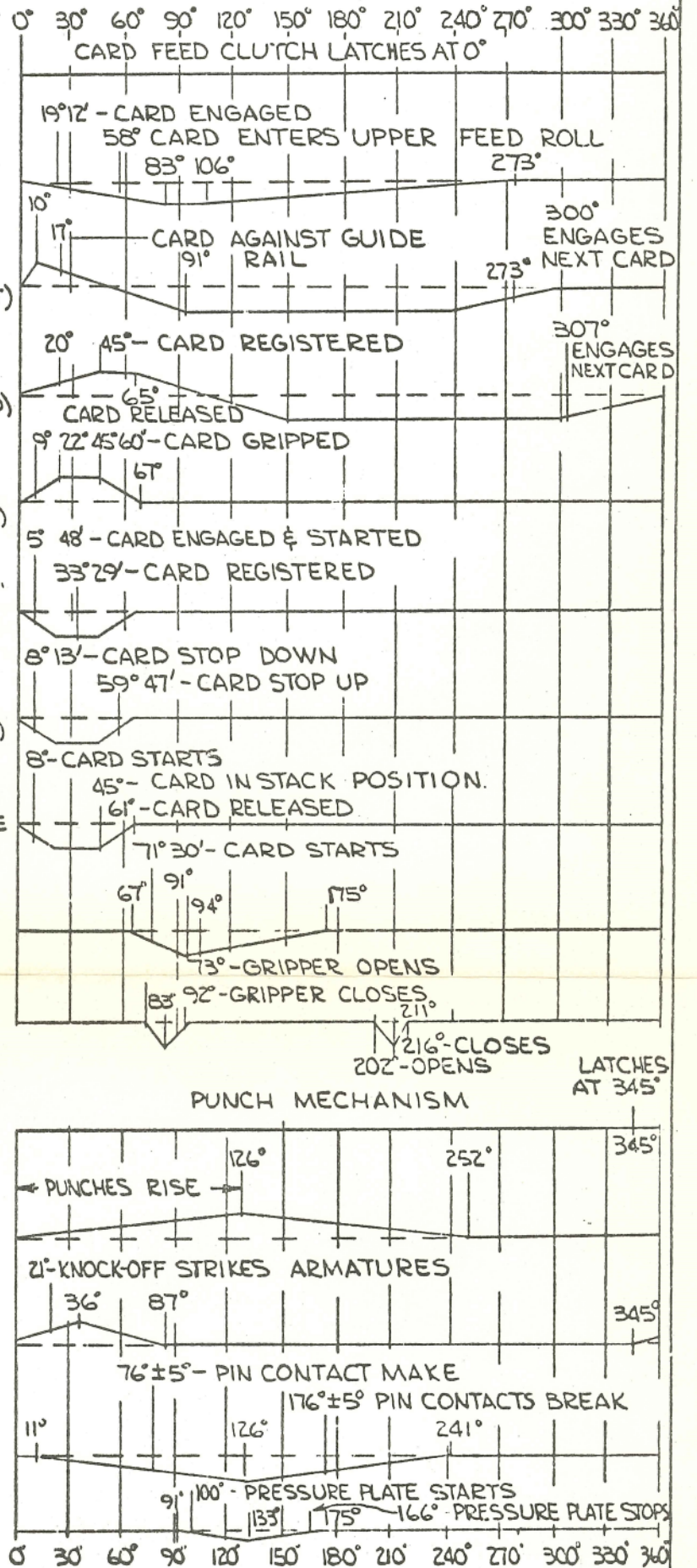
PUNCH CLUTCH
1200 RPM } NON-PRINT
1° = .139 MS }
1080 RPM } PRINT
1° = .154 MS }

PUNCH BAIL

ARMATURE KNOCK-OFF

PIN OPER CAM

PRINT CAM



INTERNATIONAL BUSINESS MACHINES CORP.		DATE	CHANGE NO.	DATE	CHANGE NO.	NOTE	DEVELOPMENT NO.
NAME SYSTEMS DIAGRAM		12-30-64	205199			X PRINT TO ENG. S-1C. NO. 895291	5373561
DESIGN WT 11-23-64 MODEL							
CHECK LF 11-23-64 DRAW KJA 12-2-64							
APPRO JKC 11-23-64 CHECK JJA 12-9-64							00.29.10.0

375105

PRINT

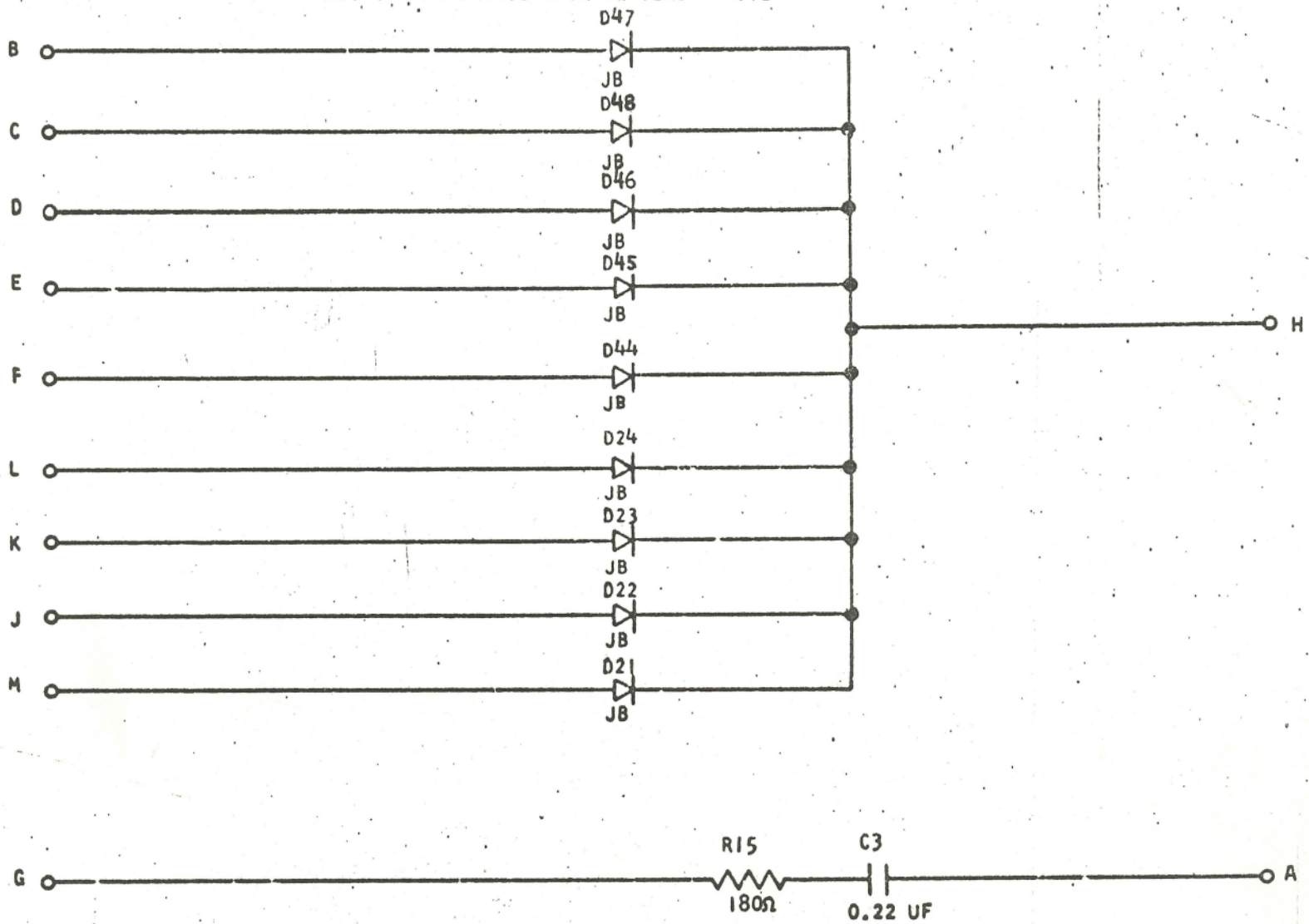
MOUNT CARD ON 1.0 INCH CENTERS - NOTE XIII

375105

F F H -

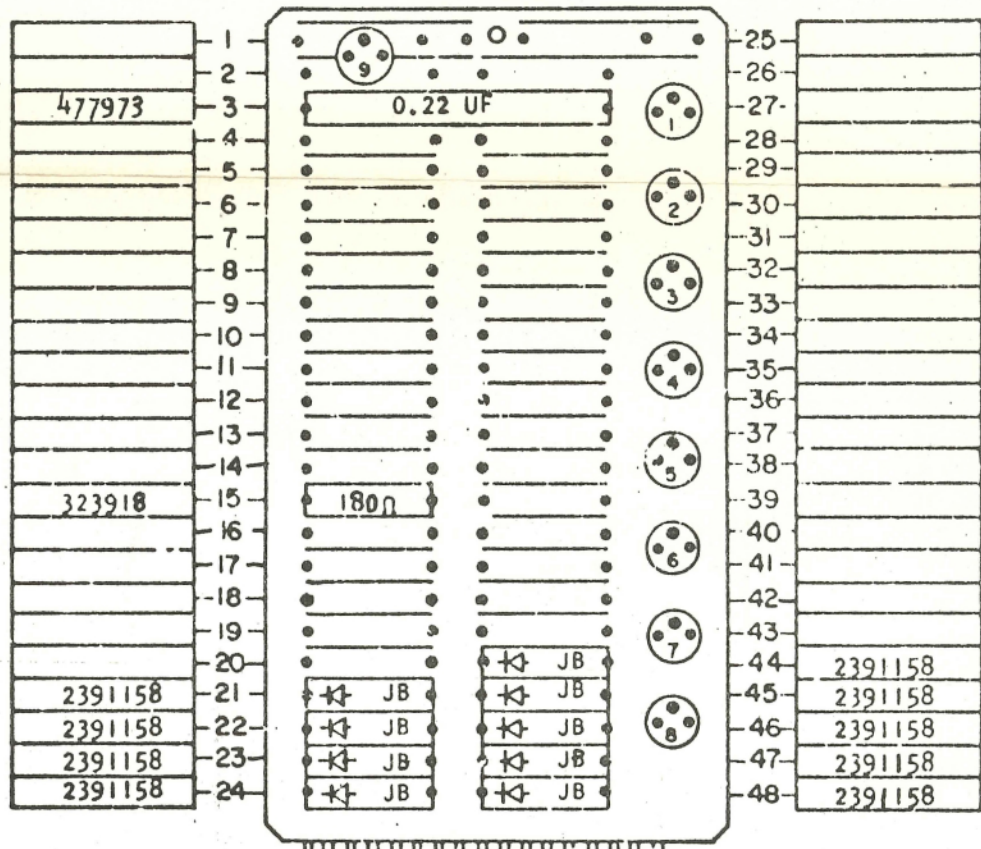
STANDARDS CODE

2-7045



NOTES

- X CIRCUIT MUST CONFORM TO ENGINEERING SPECIFICATION
- XI ASSEMBLE TO ENGINEERING SPECIFICATION 895396 AND 891999
- XII ALL RESISTORS ARE 1/2 WATT AND ± 5% UNLESS OTHERWISE NOTED
- XIII MAXIMUM HEIGHT COMPONENTS MAY PROJECT ABOVE COMPONENT SIDE OF CARD WILL BE .640



B MFG. ENG. *W* 5-31-66

CIRCUIT AND PACKAGING STANDARD

APPROVAL DATE

KMT NPB 5/6/66

HOLE PATTERN 493457

INTERNATIONAL BUSINESS MACHINES CORP.

397327

COMPONENT SIDE

NAME	DATE	CHANGE NO.	APPROVAL	DATE	CHANGE NO.	APPROVAL	DEVELOPMENT NO.
CARD ASM TSTR - PRINT	1 JUN 66	126540	<i>ATX</i>				PA-3400 A
DESIGN VE 5APR66 MODEL SMS							
DETAIL VE 5APR66 SCALE NCNE							
CHECK VE 5APR66 DRAW VE 5APR66							
APPRO CHECK <i>CIC</i> 4/11/66							

82-3987 2 6-22-61

375105

C.B. CO., NO. 43759

375233

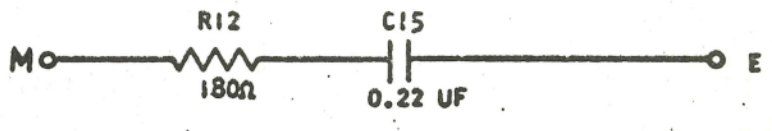
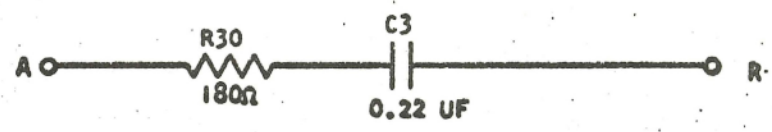
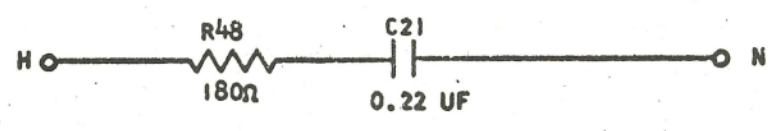
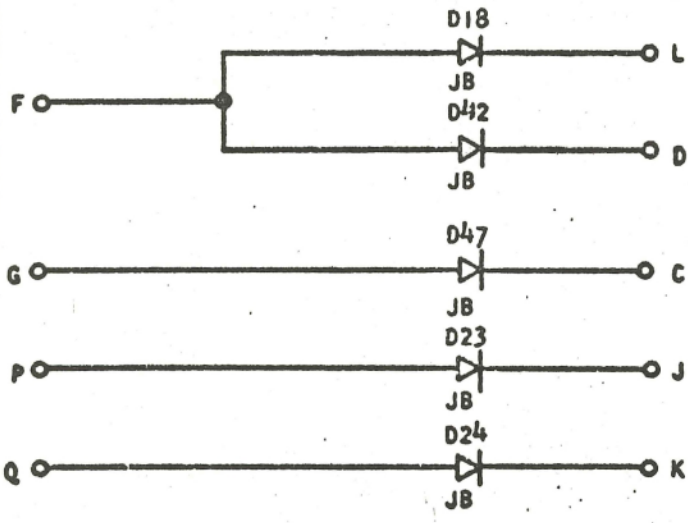
375233

F L L -

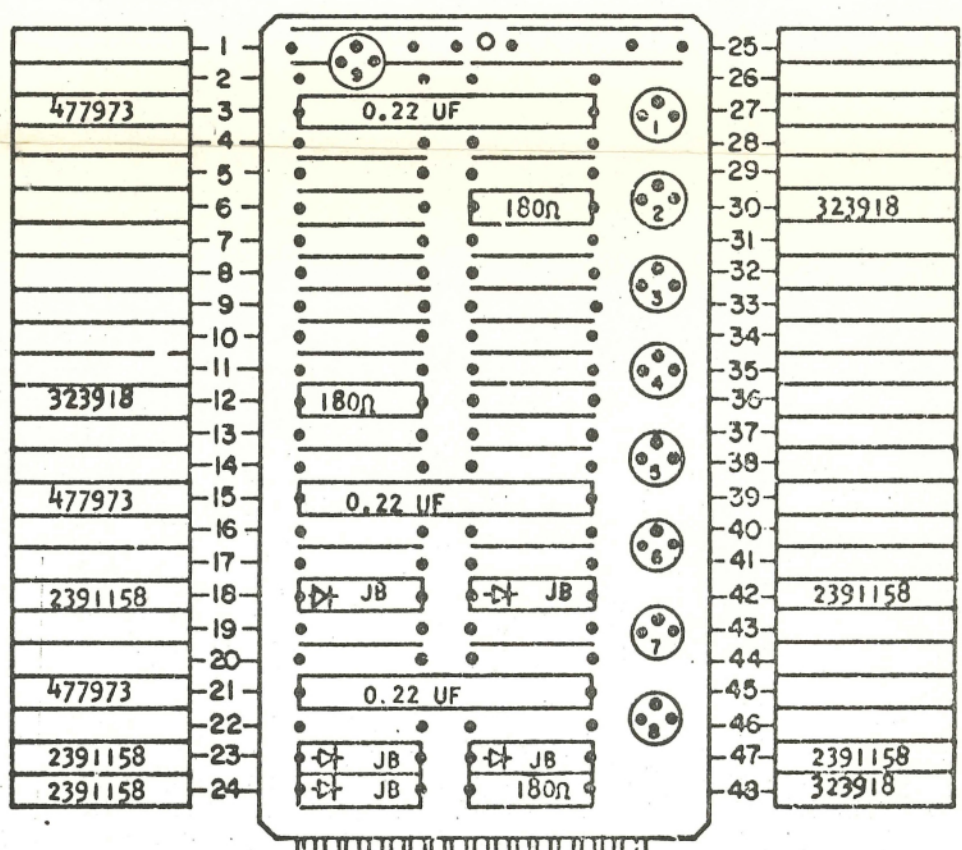
STANDARDS CODE

2-7045

ARC SUPPRESSION
MOUNT CARD ON 1.0 INCH CENTERS - NOTE XIII



- NOTES**
- X** CIRCUIT MUST CONFORM TO ENGINEERING SPECIFICATION
 - XI** ASSEMBLE TO ENGINEERING SPECIFICATION 895396 AND 891999
 - XII** ALL RESISTORS ARE 1/2 WATT AND ± 5% UNLESS OTHERWISE NOTED
 - XIII** MAXIMUM HEIGHT COMPONENTS MAY PROJECT ABOVE COMPONENT SIDE OF CARD WILL BE .640



B

MFG ENG	PW	5.16.67
CIRCUIT AND PACKAGING STANDARD		
APPROVAL	DATE	
✓ K	4-19-67	

HOLE PATTERN
493457

COMPONENT SIDE

INTERNATIONAL BUSINESS MACHINES CORP.		DATE	CHANGE NO.	APPROVAL	DATE	CHANGE NO.	APPROVAL	DEVELOPMENT NO.
NAME	CARD ASM TSTR	17MAY67	131144	[Signature]				375233
ARC SUPPRESSION								
DESIGN	MODEL							
DETAIL	SCALE							
CHECK	DRAW	SJ	10MAY67					
APPRO	CHECK	CJ	10MAY67					

STANDARDS CODE

RELEASED FOR ASM QTY

5367184

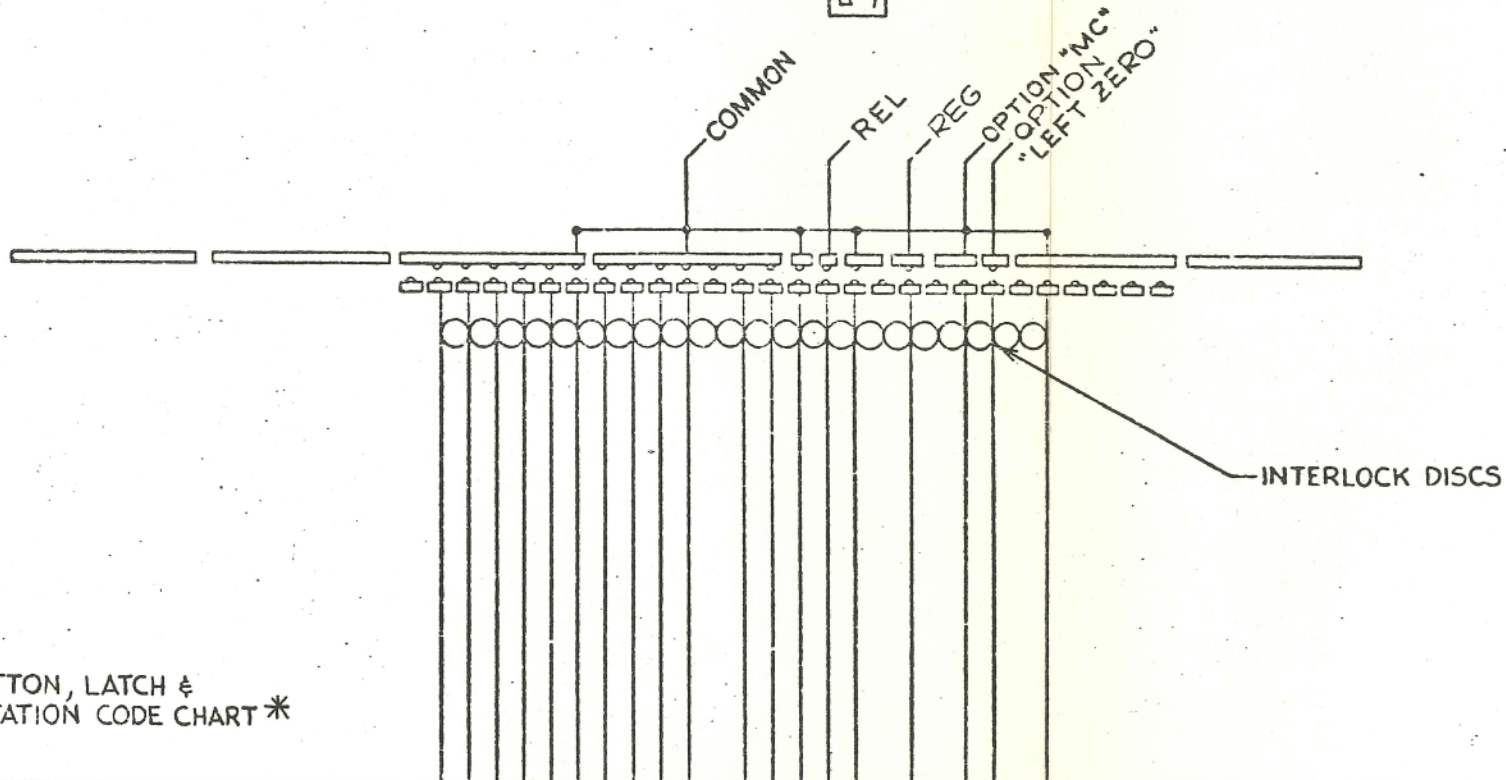
ELEC		5-21-64	205050-A	
MET		5-21-64	205022E	
PLASTIC		12-15-64	205190	
FINISH		4-20-65	205272	

TECH SERVICES APPROV	SYM	DATE	CHANGE NO	TECH APPROV	SYM	DATE	CHANGE NO

TECH APPROV	SYM	DATE	CHANGE NO

DEVELOPMENT NO	Q/M
5367184	

REFERENCE DRAWING
MASTER



KEYBUTTON, LATCH & PERMUTATION CODE CHART *

5367184

KEYBUTTON CHART		STEM POS	1	2	3	4	5	6	7	8	9	10	11	12	13	14	15	16	17	18	19	20	21	22	23	24	25	26	27	28	29	30	31	32	33	34	35	36	37	38	39	40	41	42	43	44	45	46	47	48	49	50	
NUMERIC CHARACTER	STD																																																				
KEYSTEM CONT N/O																																																					
KEYSTEM CONT N/C																																																					
SPACER 313274 QUAN																																																					

* SEE REF DWG P/N
\$ IN MACHINE FINAL ASSEMBLY ADD 1 SPACER FOR MODELS A AND C ONLY, TO DISABLE LEFT-ZERO KEY.

IBM MATERIAL	NO	TOLERANCE UNLESS OTHERWISE NOTED	2 PLACE DEC ±	MUST CONFORM TO ENG SPEC 890350	INTERNATIONAL BUSINESS MACHINES CORP
CASE DEPTH			3 PLACE DEC ±	ALIGNMENT WITHIN	NOTE I
HARDNESS			ANGLES ±	CONC TO DU WITHIN	TIR NOTE II
SURFACE TREATMENT		CORNERS AND / OR EDGES BROKEN	OUTSIDE MAX	FLAT WITHIN	NOTE III
		RADIUS UNLESS OTHERWISE NOTED	INSIDE MAX	PARALLEL TO DU WITHIN	NOTE IV
				STRAIGHT WITHIN	NOTE V
				SQUARE TO DU WITHIN	NOTE VI

5367184

NAME	CODE CHART -
DESIGN	FSV 420 64
CHECK	RAS 4-20-64
APPRO	JKC 4-20-64
TYPE	SCALE
DRAW	CDA 5-14-64
CHECK	JMA 5-18-64